



Christ Church
Grammar School

2021
TEST 3

MATHEMATICS SPECIALIST Year 12

Section One: Calculator-free

Your name _____

Teacher's name _____

Time and marks available for this section

Reading time for this section:	2 minutes
Working time for this section:	25 minutes
Marks available:	23 marks

Materials required/recommended for this section

To be provided by the supervisor

This Question/Answer Booklet
Formula Sheet

To be provided by the candidate

Standard items: pens (blue/black preferred), pencils (including coloured), sharpener, correction fluid/tape, eraser, ruler, highlighters

Special items: nil

Important note to candidates

No other items may be taken into the examination room. It is **your** responsibility to ensure that you do not have any unauthorised notes or other items of a non-personal nature in the examination room. If you have any unauthorised material with you, hand it to the supervisor **before** reading any further.

Instructions to candidates

1. The rules of conduct of the CCGS assessments are detailed in the Reporting and Assessment Policy. Sitting this assessment implies that you agree to abide by these rules.
2. Write your answers in this Question/Answer Booklet using a blue/black pen. Do not use erasable or gel pens.
3. Answer all questions.
4. You must be careful to confine your response to the specific question asked and to follow any instructions that are specified to a particular question.
5. Supplementary pages for the use of planning/continuing your answer to a question have been provided at the end of this Question/Answer booklet. If you use these pages to continue an answer, indicate at the original answer where the answer is continued, i.e. give the page number.
6. **Show all your working clearly.** Your working should be in sufficient detail to allow your answers to be checked readily and for marks to be awarded for reasoning. Incorrect answers given without supporting reasoning cannot be allocated any marks. For any question or part question worth more than two marks, valid working or justification is required to receive full marks. If you repeat an answer to any question, ensure that you cancel the answer you do not wish to have marked.
7. It is recommended that **you do not use pencil**, except in diagrams.

Question 1**(6 marks)**

(a) Express $\frac{4x+3}{9x-6x^2}$ in the format $\frac{a}{3x} + \frac{b}{3-2x}$ where $a, b \in \mathbb{R}$.

(3 marks)

(b) Hence, determine $\int \frac{4x+3}{9x-6x^2} dx$.

(3 marks)

Question 2**(7 marks)**

(a) Determine $\int \left(\frac{\pi \sin x - \pi}{\sqrt{x + \cos(x)}} \right) dx$

(4 marks)

(b) Evaluate $\int_1^3 \left(\frac{x}{4-x^2} \right) dx$

(3 marks)

Question 3**(5 marks)**

Evaluate the following definite integral using an appropriate substitution.

$$\int_0^1 12x(2x - 1)^4 dx$$

Question 4

(5 marks)

Evaluate

$$\int_0^{\frac{\pi}{4}} (\cos(x) + 2 \sin(x))^2 dx$$

End of questions

Additional working space

Question number: _____

Additional working space

Question number: _____



MATHEMATICS SPECIALIST Year 12

Section Two:

Calculator-assumed

Your name _____

Teacher's name _____

Time and marks available for this section

Reading time for this section:	2 minutes
Working time for this section:	20 minutes
Marks available:	18 marks

Materials required/recommended for this section

To be provided by the supervisor

This Question/Answer Booklet
Formula Sheet

To be provided by the candidate

Standard items: pens (blue/black preferred), pencils (including coloured), sharpener, correction fluid/tape, eraser, ruler, highlighters

Special items: drawing instruments, templates, and up to three calculators approved for use in this assessment

Important note to candidates

No other items may be taken into the examination room. It is **your** responsibility to ensure that you do not have any unauthorised notes or other items of a non-personal nature in the examination room. If you have any unauthorised material with you, hand it to the supervisor **before** reading any further.

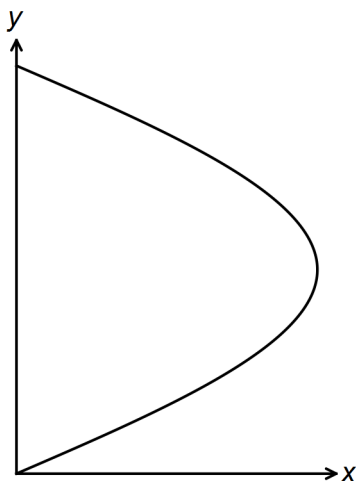
Instructions to candidates

1. The rules of conduct of the CCGS assessments are detailed in the Reporting and Assessment Policy. Sitting this assessment implies that you agree to abide by these rules.
2. Write your answers in this Question/Answer Booklet using a blue/black pen. Do not use erasable or gel pens.
3. Answer all questions.
4. You must be careful to confine your response to the specific question asked and to follow any instructions that are specified to a particular question.
5. Supplementary pages for the use of planning/continuing your answer to a question have been provided at the end of this Question/Answer booklet. If you use these pages to continue an answer, indicate at the original answer where the answer is continued, i.e. give the page number.
6. **Show all your working clearly.** Your working should be in sufficient detail to allow your answers to be checked readily and for marks to be awarded for reasoning. Incorrect answers given without supporting reasoning cannot be allocated any marks. For any question or part question worth more than two marks, valid working or justification is required to receive full marks. If you repeat an answer to any question, ensure that you cancel the answer you do not wish to have marked.
7. It is recommended that **you do not use pencil**, except in diagrams.

Question 5

(5 marks)

A section of the graph of the curve $x = \sin\left(\frac{\pi y}{4}\right)$ in the first quadrant is sketched below.



- (a) Determine the area of the region bounded by the curve $x = \sin\left(\frac{\pi y}{4}\right)$ and the $y - \text{axis}$. (3 marks)

- (b) Determine the volume of the solid if it is rotated around the $y - \text{axis}$ for one revolution. (2 marks)

Question 6

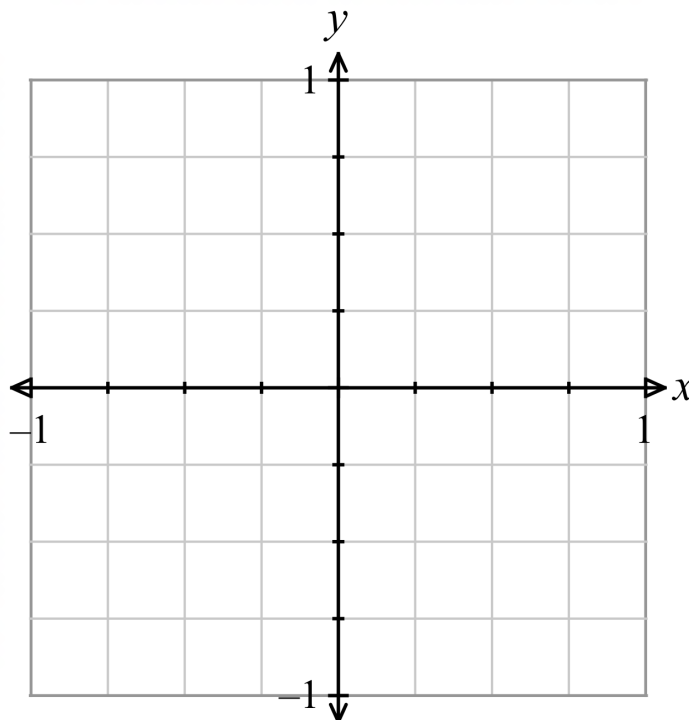
(9 marks)

A particle's position vector, $r(t)$ in metres, at any time t seconds is given by the equation

$$r(t) = \begin{pmatrix} \sin(2t) \\ \sin t \end{pmatrix}$$

(a) Plot the path of the particle on the axes shown below.

(3 marks)



(b) Determine the Cartesian equation of the path in the form $x^2 = f(y)$.

(2 marks)

Question 6 continued

- (c) Determine the speed of the particle when it reaches the point where $x = -0.5$ for the second time. (4 marks)

Question 7**(4 marks)**

Determine, the solution(s) for the following systems of equations. In each case, interpret the systems of equations geometrically.

(a) $8x + y + z = 15$
 $2x + y - z = 3$
 $x - y + 2z = 3$ (2 marks)

(b) $x + y = z - 2$
 $x - y + z = 1$
 $x + z = y + 3$ (2 marks)

Additional working space

Question number: _____

Additional working space

Question number: _____